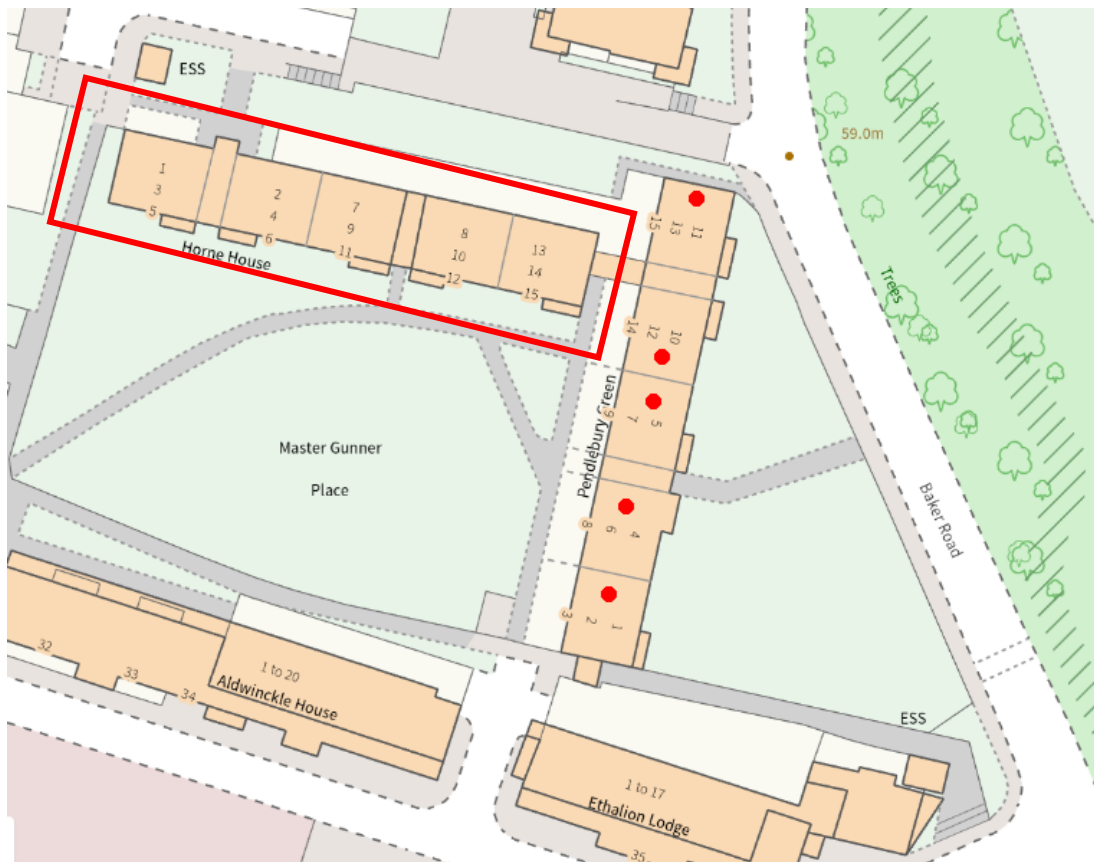


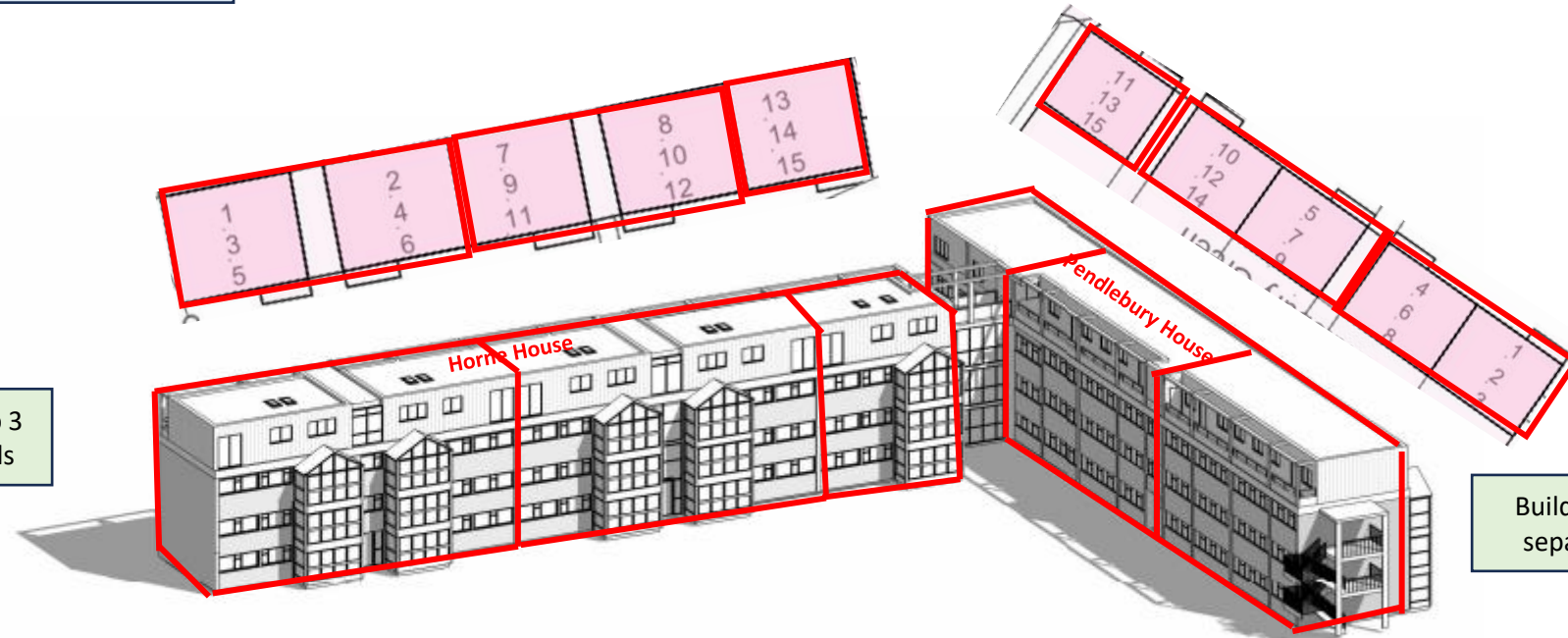
Horne House
Master Gunnar Place
London SE18 4NH



Existing flat numbering

NOTE: Post is currently delivered to individual letters boxes installed in the entrance lobby of each separate core

Building split internally into 3 separate cores by stairwells



Building split internally into 3 separate cores by stairwells

NOTE: The existing address and wayfinder signage isn't clear and needs reviewing to incorporate the new third floor flats.

① Aerial View

Horne House Third Floor Plan

NOTE: Lower floors are separated internally into 3 separate cores by stairwells but the new third floor will be accessible across all three cores via two stairwells.

Numbering Sequence starts here

